

PAROS LUXURY RESIDENCES



Meet the Cyclades

The most famous island group in the Aegean Archipelago comprises some of the most beautiful islands in the world! Gorgeous sandy beaches, architecture in white and blue, traditional lifestyle, folk music, warm, hospitable people and barren landscapes with isolated chapels turn a trip to the Cyclades Plateau into a lifetime experience. The magnificent beauty of Cyclades is everywhere you look. You can't help filling your eyes with dazzling images, so elegant, delicate and beautiful.



About us

With a global presence for the past 45 years, Rockland Group is renowned for delivering superior development projects and propelling the real estate market to new heights and potentials. With an insatiable passion for transforming and evolving property markets and a solid dedication to offering the highest possible standards, the Group has now entered the real estate sector in various countries and cities, one of which happens to be Greece. Today, the company aims for redefining residential and commercial development by locating and utilizing the absolute best sites and continuing to create game-changing projects for potential clients and investors.



About us

At The Paros Project, we specialise in creating more than just living spaces; we are dedicated to crafting vibrant community developments that enhance the island's experience. Through thoughtful design and meticulous planning, we foster environments where residents can truly immerse themselves in the beauty and spirit of Paros. Our Projects focus on nurturing connections, spaces where every individual can thrive and find their place within the community fabric. Living on the Greek island of Paros offers a unique blend of history, culture, and natural beauty. From exploring ancient ruins to enjoying fresh seafood by the sea, life here is a harmonious mix of tradition and modernity. With its vibrant community, stunning landscapes, and thriving culinary scene, Paros embodies the essence of Greek island living.



THE PAROS PROJECT



The island of Paros

Paros is a beautiful island of the Cyclades Plateau. Combining modern with traditional elements in the most unique way, it is a mix of traditional Cycladic architecture, vivid nightlife, magical beaches, enchanting rural villages, and historical monuments.

Whether you're after relaxation or you are more of a thrill-seeker, Paros island will give you exactly what you want. Additionally, a stay on the island without lasting, delicious tavern meals by the sea is surely incomplete. From Greek traditional taverns to fancy restaurants, one thing is for sure: the culinary experience on the island leaves no one disappointed!

Night Life

Paros is renowned for its cosmopolitan and exciting nightlife with many drinking and dancing venues. You can find a great variety of different clubs in Paros, vibrant nightclubs, live music clubs, and beach clubs that organize fun parties. There are also some hidden venues in private beaches on the east and south coasts.



Travel to Paros by air

Athens International
Airport - 45 mins

Travel to Paros by sea

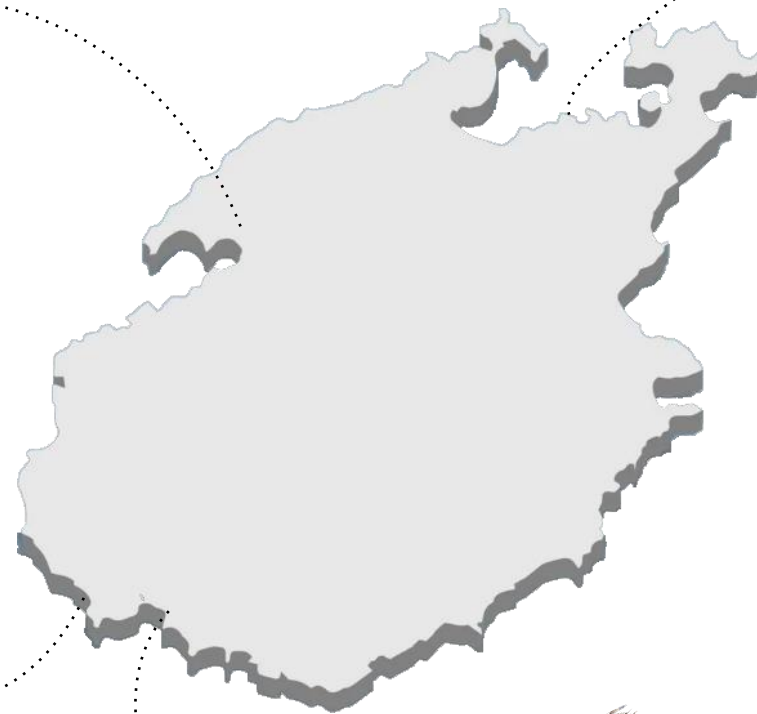
Piraeus Sea Port-
3hrs

NAOUSA

30 min drive from Ammos

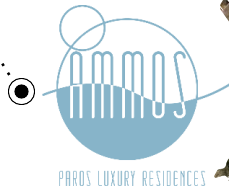
PARIKIA

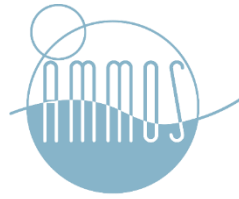
15 min drive from Ammos



PAROS AIRPORT

8 min drive from Ammos





Why Ammos?



Ammos is the Greek word for sand. The name of the complex celebrates the main feature of the Cycladic beaches- their sun-kissed sand, soft and warm, creating outstanding color, with sunlight filling each residence with its magnificent splendor.

Ammos consists of a four-residence villa complex in Alyki village, with traditional whitewashed walls, iconic Greek marble, contemporary twists, floor-to-ceiling glass, sleek design accents, and statement fittings. Each villa boasts 4 master bedrooms, a modern kitchen, balconies, a Jacuzzi and a landscaped courtyard.

Sizes range from 135SQM to 180SQM



Designed for you,
inspired by the Cyclades



Rear View




**ROCKLAND
GREECE**


THE PAROS PROJECT



Bird's Eye View




**ROCKLAND
GREECE**


THE PAROS PROJECT



Bird's Eye View





Bird's Eye View



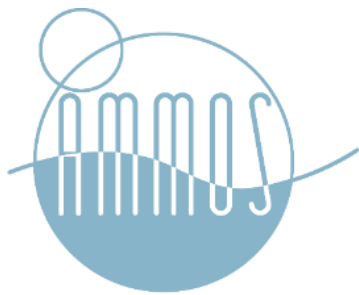













**ROCKLAND
GREECE**


THE PAROS PROJECT



PAROS LUXURY RESIDENCES

Master Layout (Level 0)

COMPLEX OF 4 RESIDENCES

TOTAL PLOT AREA: 420 SQM

TOTAL BUILD UP: 630 SQM

EACH RESIDENCE INCLUDES:

MASTER BEDROOMS

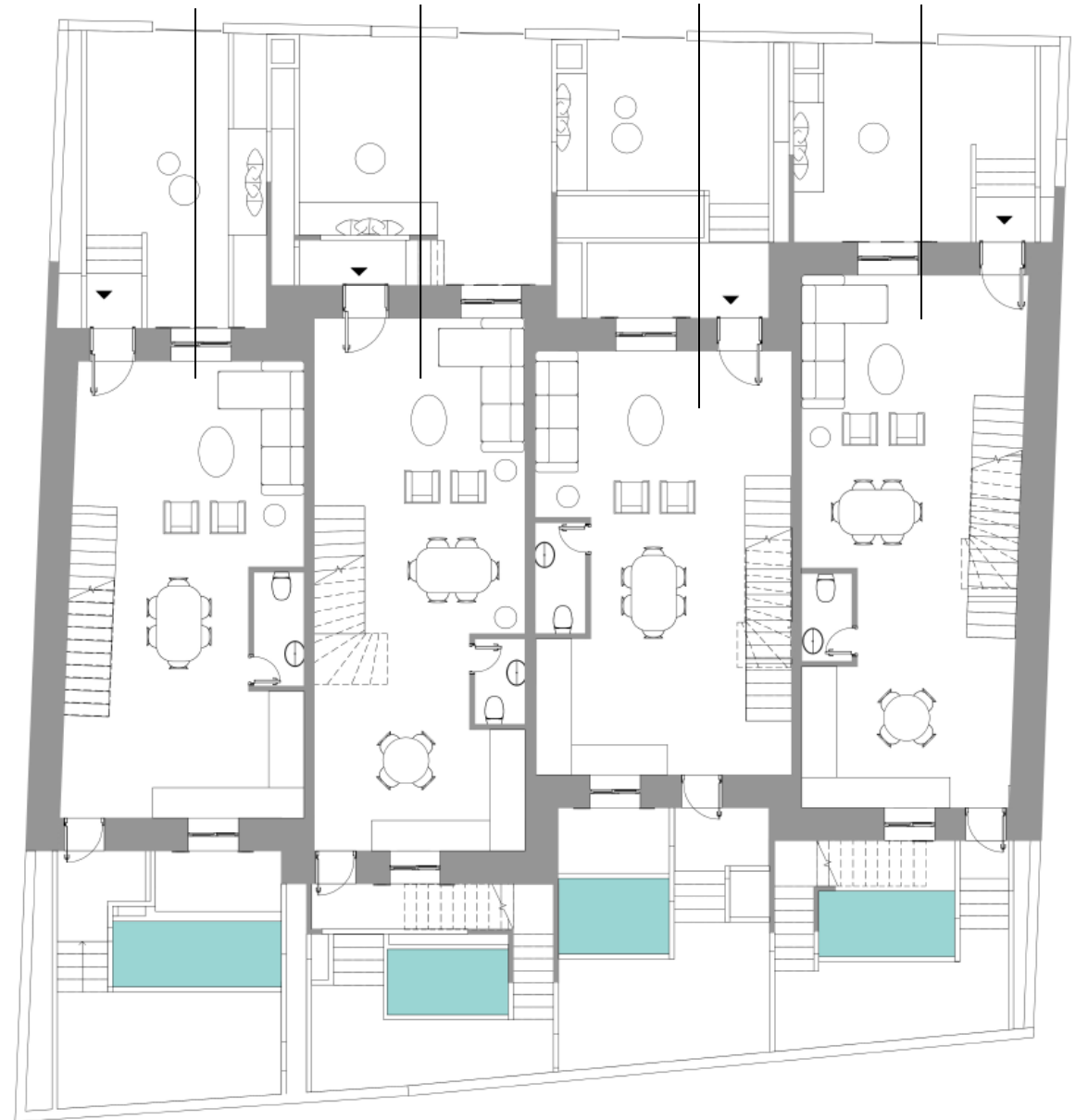
KITCHEN

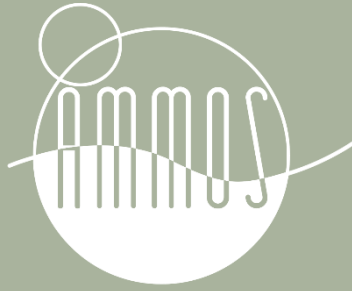
JACUZZI

TERRACE



KYMA ANEMOS KORALI AKTI





PAROS LUXURY RESIDENCES

Master Layout (Level +1)

COMPLEX OF 4 RESIDENCES

TOTAL PLOT AREA: 420 SQM

TOTAL BUILD UP: 630SQM

EACH RESIDENCE INCLUDES:

MASTER BEDROOMS

KITCHEN

JACUZZI

TERRACE



KYMA ANEMOS KORALI AKTI





PAROS LUXURY RESIDENCES

Master Layout (Level +2)

COMPLEX OF 4 RESIDENCES

TOTAL PLOT AREA: 420 SQM

TOTAL BUILD UP: 630 SQM

EACH RESIDENCE INCLUDES:

MASTER BEDROOMS

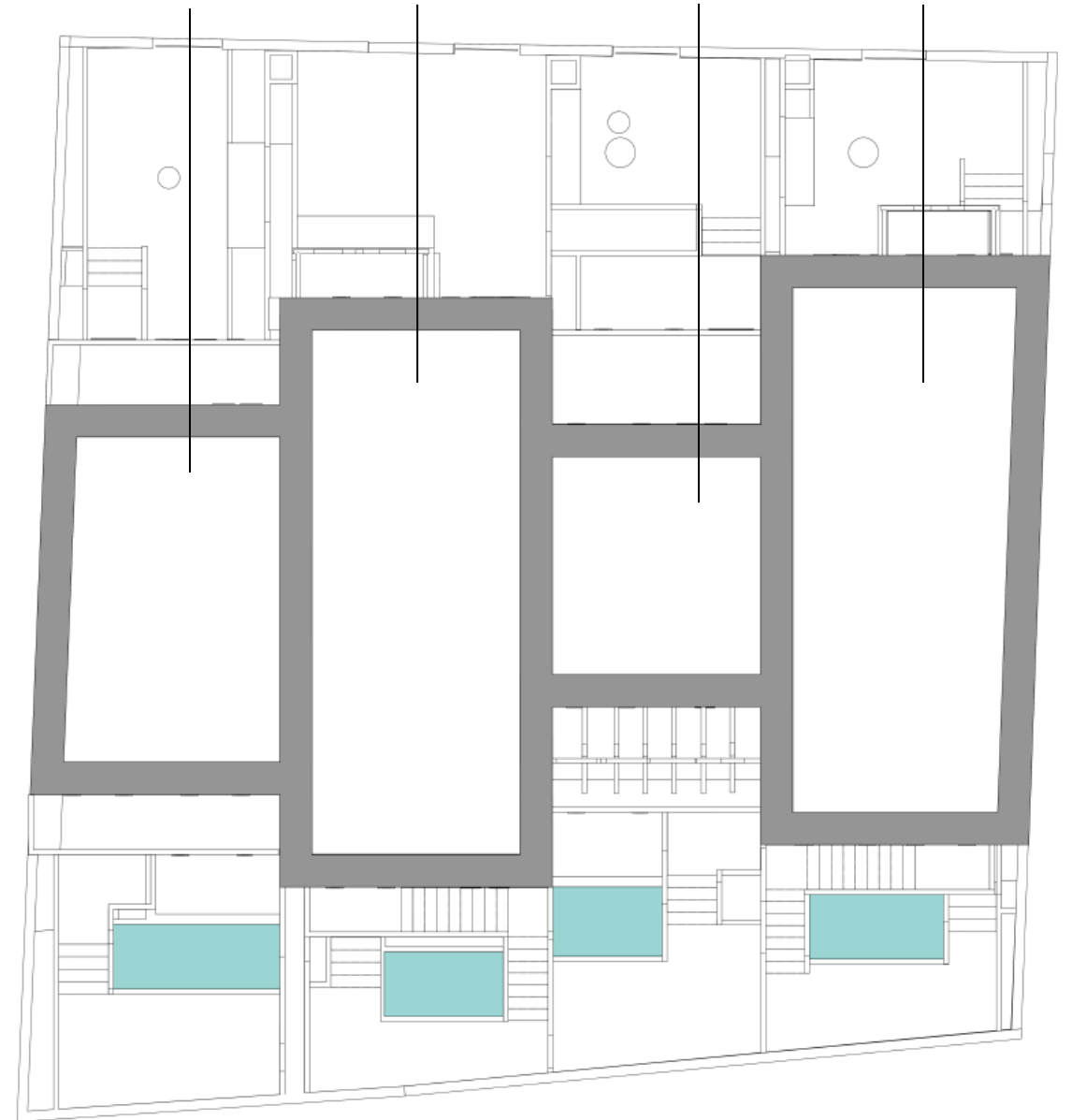
KITCHEN

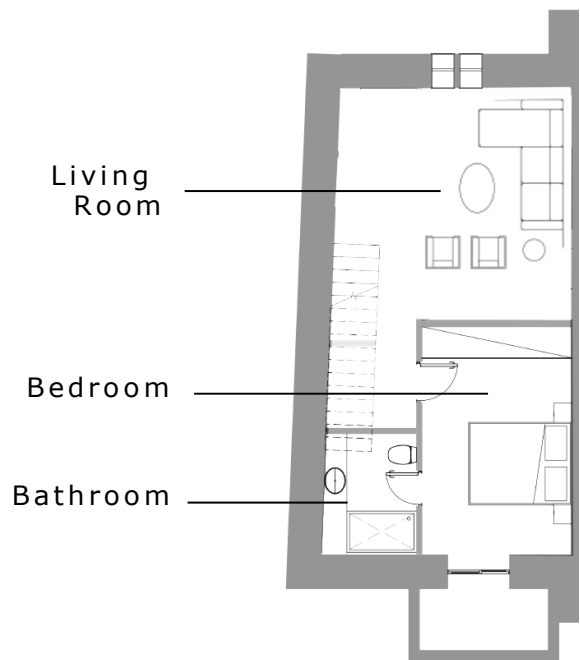
JACUZZI

TERRACE

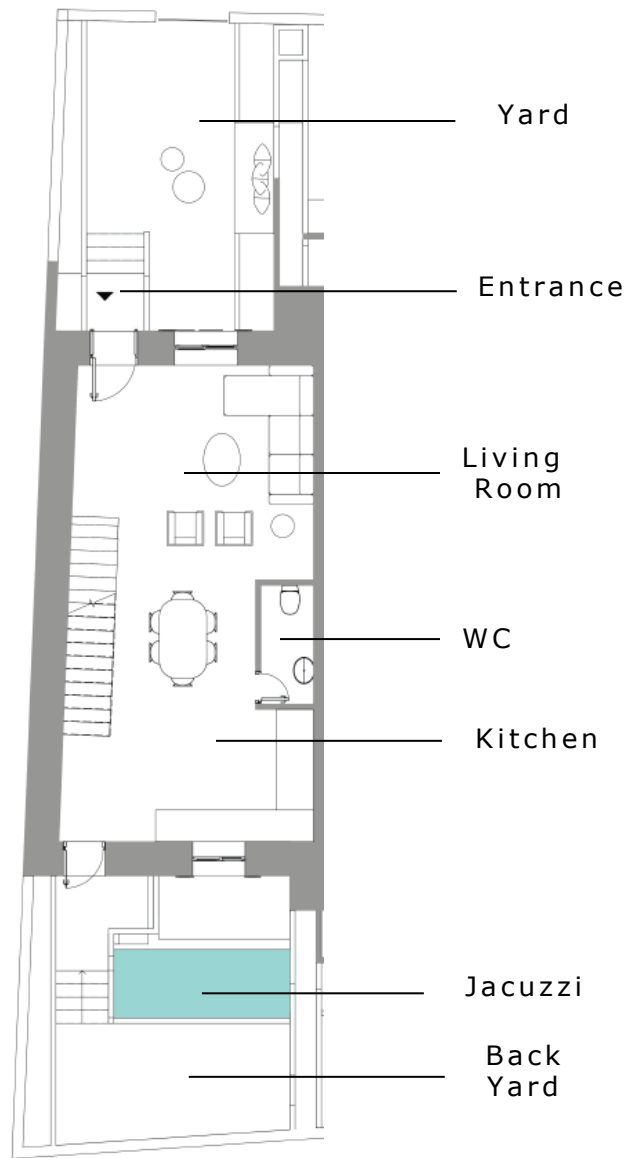


KYMA ANEMOS KORALI AKTI





Level -1



Level 0



PAROS LUXURY RESIDENCES

KYMA RESIDENCE

154.9 SQM

Level -1 and Level 0

TOTAL PLOT AREA 114.6 SQM

LEVEL -1

Living R + Bedroom: 56.3 SQM

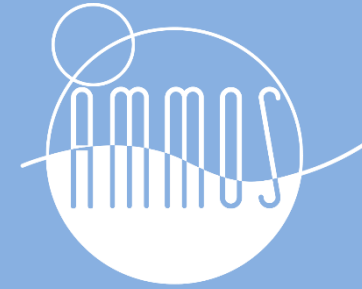
LEVEL 0

LIVING AREA: 56.3 SQM

1 WC

1 LIVING ROOM

1 JACUZZI



PAROS LUXURY RESIDENCES

KYMA RESIDENCE

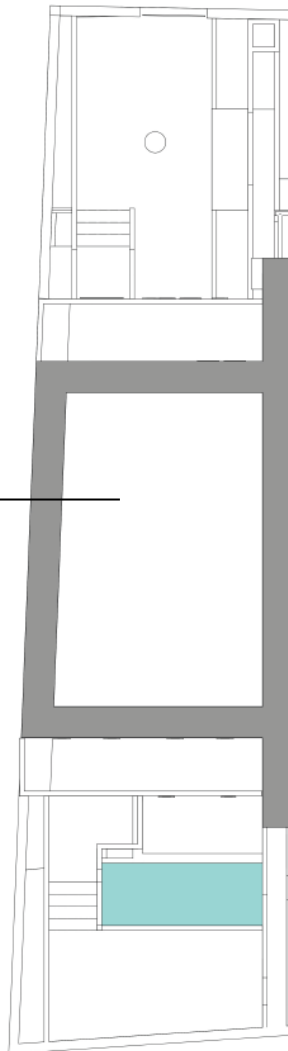
154.9 SQM

Level +1 and Level +2

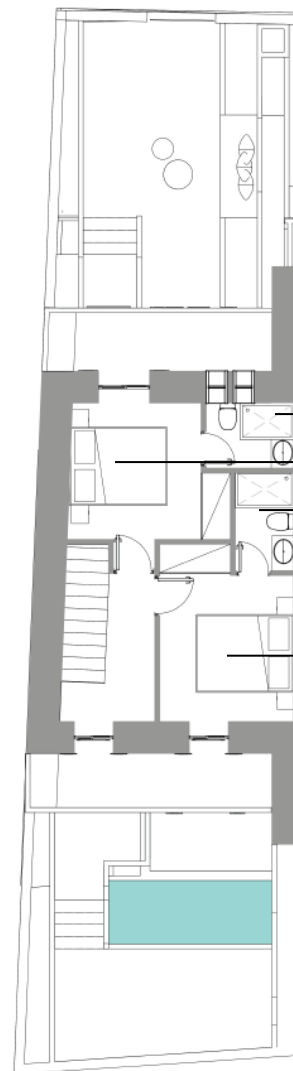
TOTAL PLOT AREA 114.6 SQM

LEVEL +1
LIVING AREA: 42.3 SQM
2 BATHROOMS
2 BEDROOMS

LEVEL +2
1 TERRACE : 42.3 SQM



Level +2



Level +1

Bathroom

Bedroom

Bathroom

Bedroom

Terrace



PAROS LUXURY RESIDENCES

ANEMOS RESIDENCE

158.75 SQM

Level -1 and Level 0

TOTAL PLOT AREA 99.55 SQM

LEVEL -1

Living R + Bedroom:: 53.1 SQM

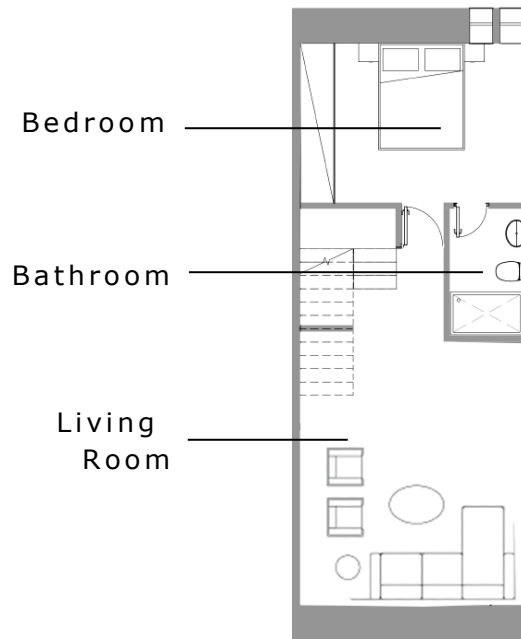
LEVEL 0

LIVING AREA: 53.1 SQM

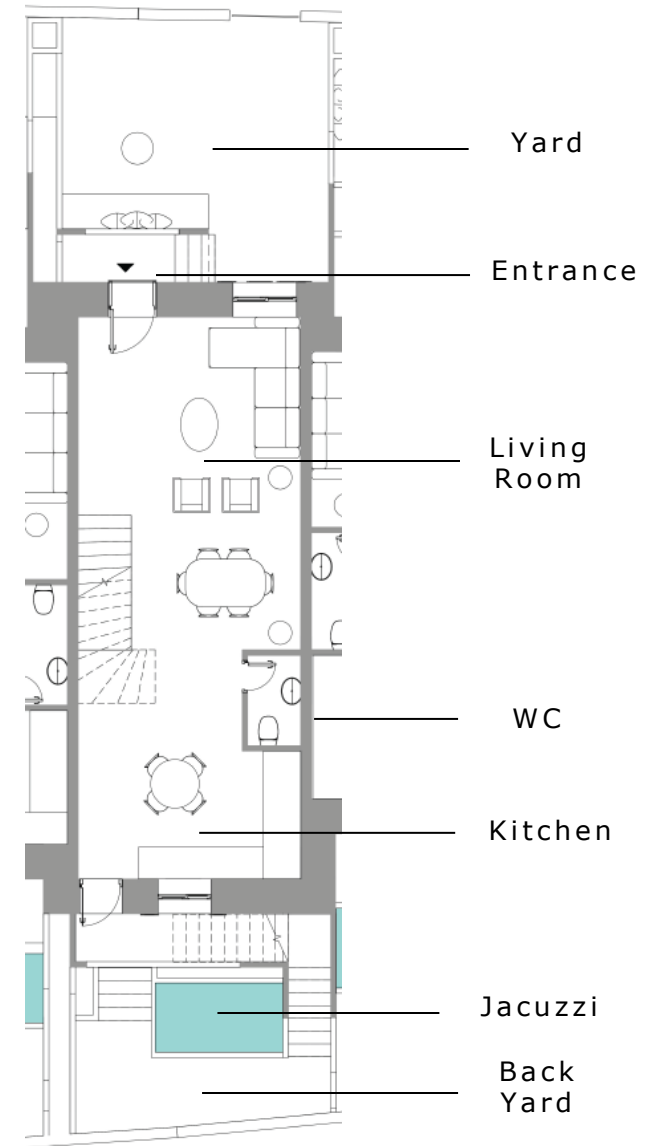
1 WC

1 LIVING ROOM

1 JACUZZI

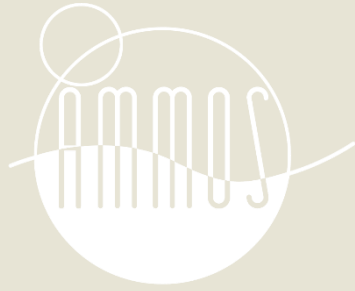


Level -1



Level 0





PAROS LUXURY RESIDENCES

ANEMOS RESIDENCE

158.75 SQM

Level +1 and Level +2

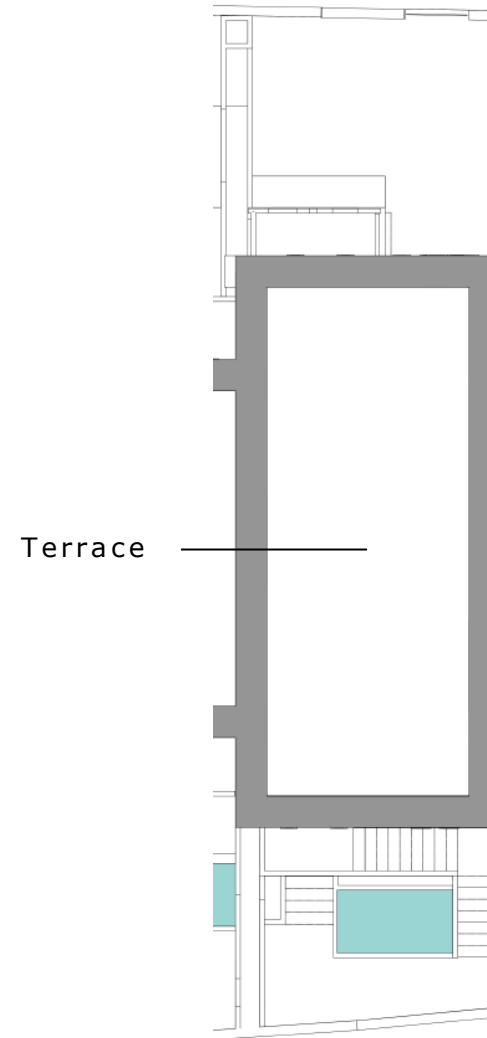
TOTAL PLOT AREA 99.55 SQM

LEVEL +1

LIVING AREA: 52.1 SQM
2 BATHROOMS
2 BEDROOMS

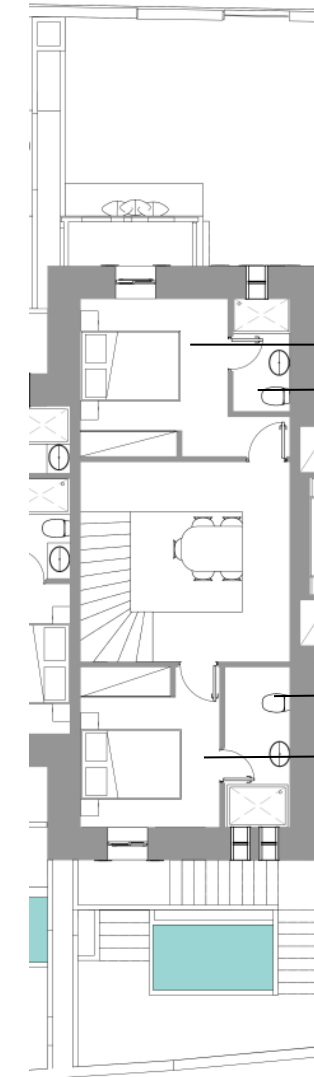
LEVEL +2

1 TERRACE : 52.1 SQM



Terrace

Level +2



Bedroom

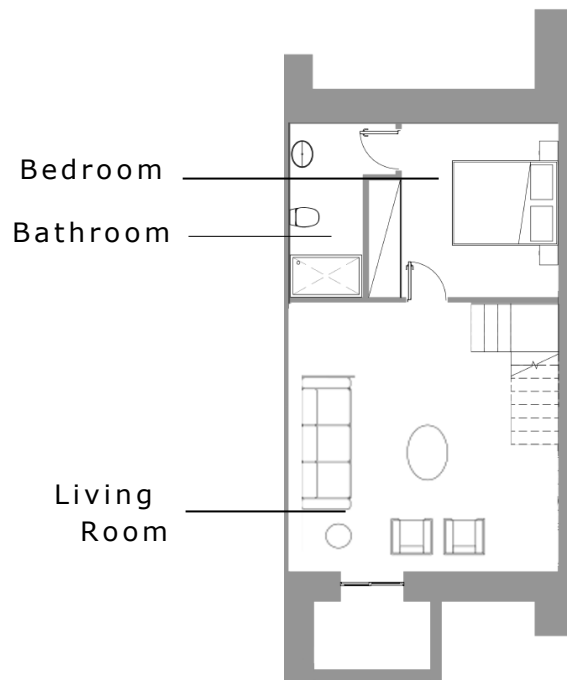
Bathroom

Bathroom

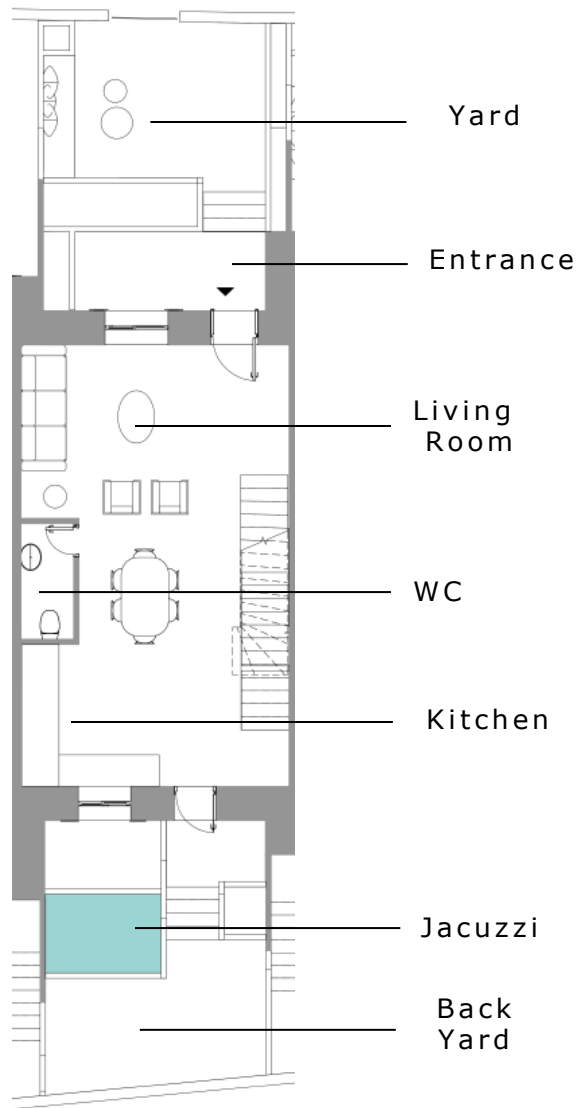
Bedroom

Level +1

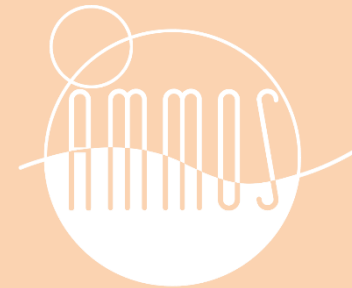




Level -1



Level 0



PAROS LUXURY RESIDENCES

KORALI RESIDENCE

135.2 SQM
Level -1 and Level 0

TOTAL PLOT AREA 100.63 SQM LEVEL

-1

Living R + Bedroom:: 52.06 SQM

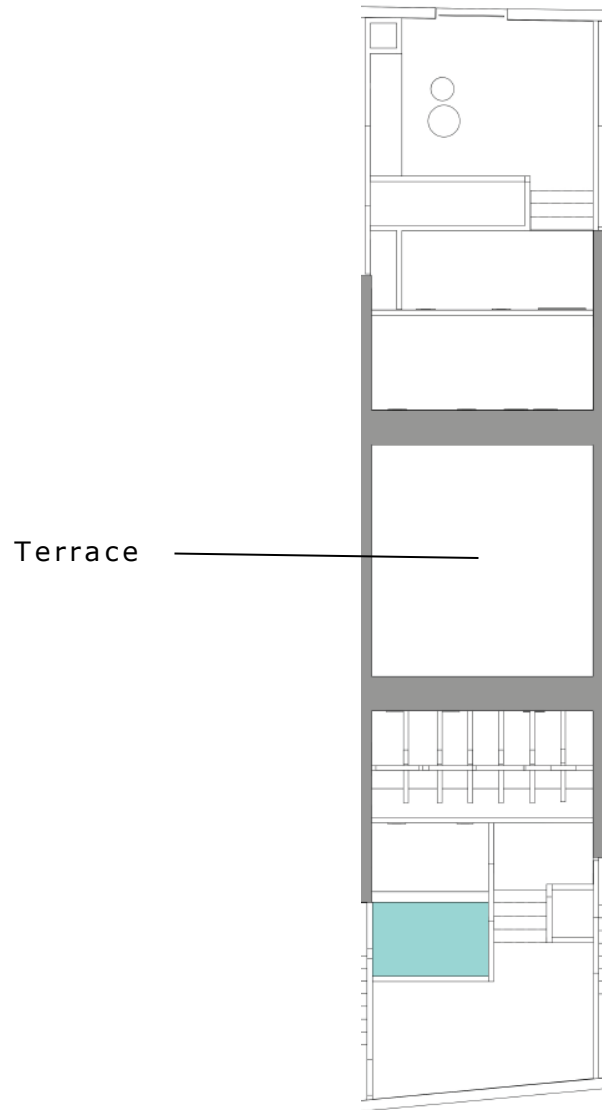
LEVEL 0

LIVING AREA: 52.06 SQM

1 WC

1 LIVING ROOM

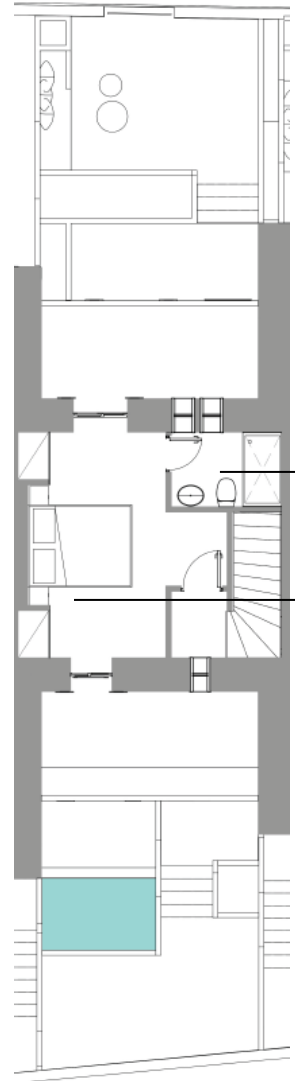
1 JACUZZI



Terrace



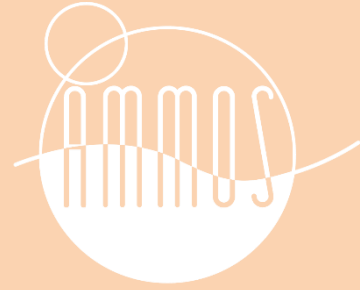
Level +2



Bathroom

Bedroom

Level +1



PAROS LUXURY RESIDENCES

KORALI RESIDENCE

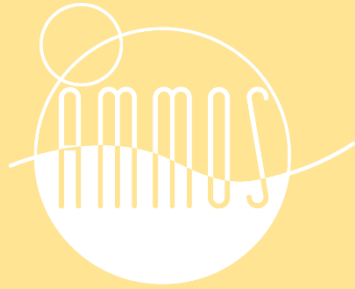
135.2 SQM
Level +1 and Level +2

TOTAL PLOT AREA 100.63 SQM

LEVEL +1
 LIVING AREA: 31.07 SQM
 1 BATHROOM
 1 BEDROOM

LEVEL +2
 1 TERRACE : 31.07 SQM





PAROS LUXURY RESIDENCES

AKTI RESIDENCE

180.23 SQM Level -1 and Level 0

TOTAL PLOT AREA 105.33 SQM

LEVEL -1

Living R + Bedroom:: 60.93 SQM

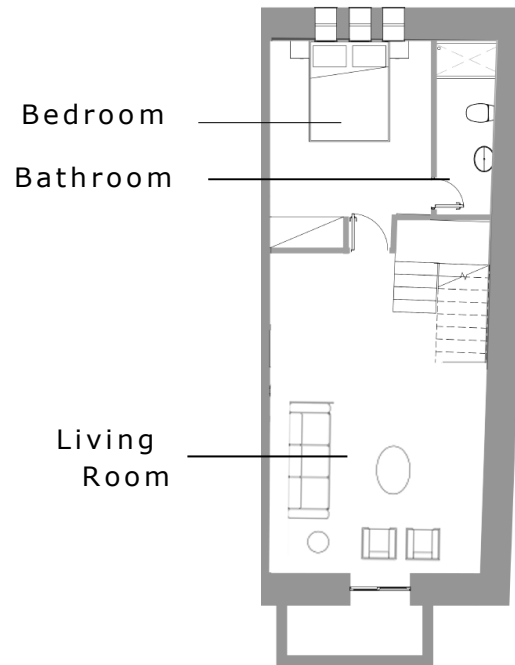
LEVEL 0

LIVING AREA: 60.93 SQM

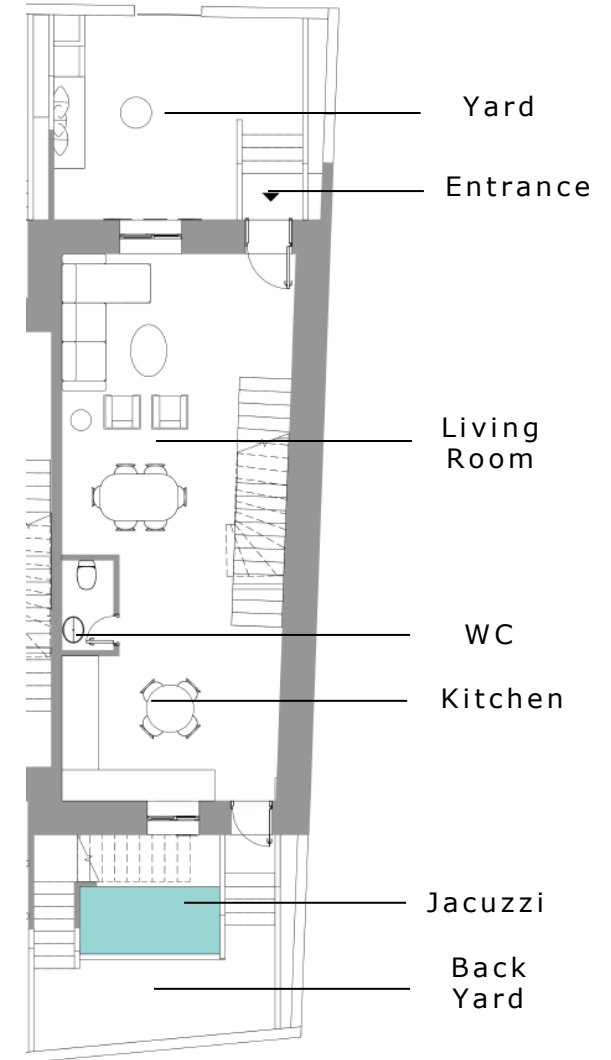
1 WC

1 LIVING ROOM

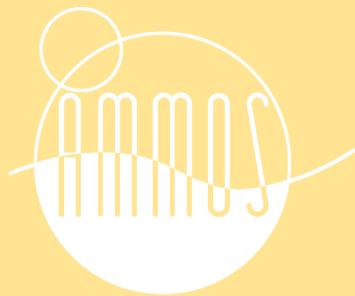
1 JACUZZI



Level -1



Level 0



PAROS LUXURY RESIDENCES

AKTI RESIDENCE

180.23 SQM
Level +1 and Level +2

TOTAL PLOT AREA 105.33 SQM

LEVEL +1

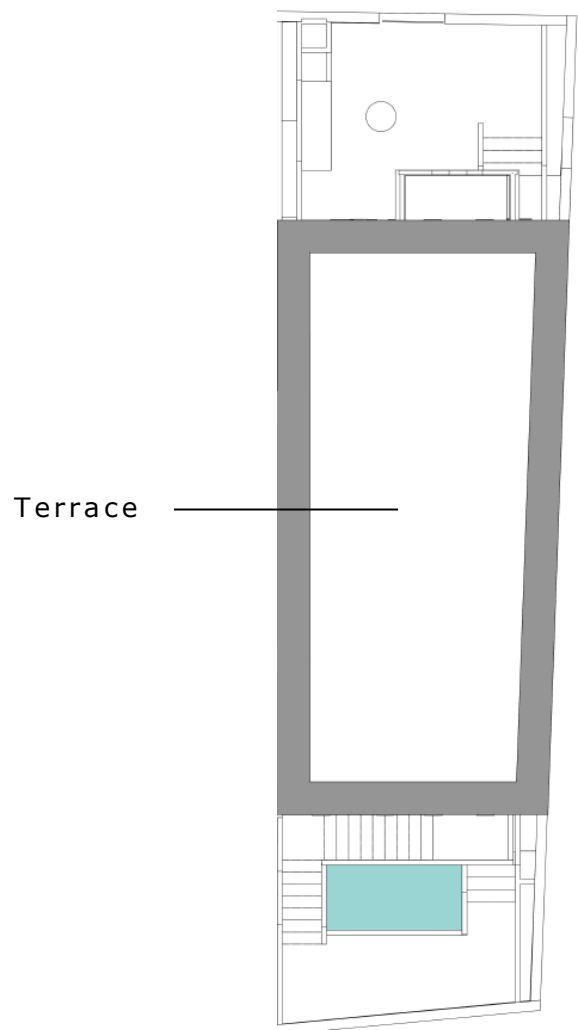
OPE SPACE: 58.37 SQM 2

BATHROOMS

2 BEDROOMS

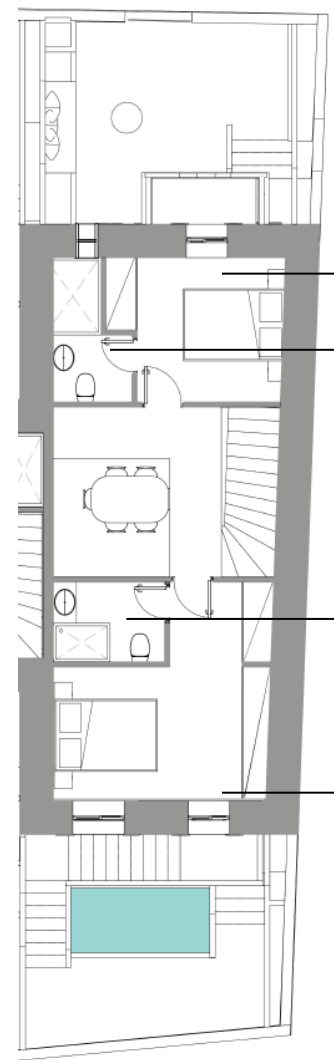
LEVEL +2

1 TERRACE : 63.57 SQM



Terrace

Level +2



Bedroom

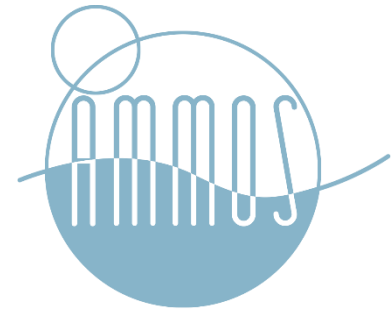
Bathroom

Bathroom

Bedroom

Level +1





PAROS LUXURY RESIDENCES



117, Vouliagmenis Avenue
166 74 Glyfada Athens
+30 6931000042
sales@rocklandgr.com
www.rocklandgr.com



Laodikis 24
166 74 Glyfada Athens
+30 2152152244
Info@theparosproject.com
www.theparosproject.com